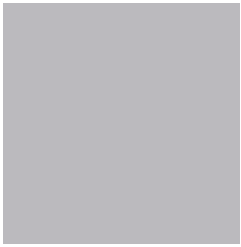
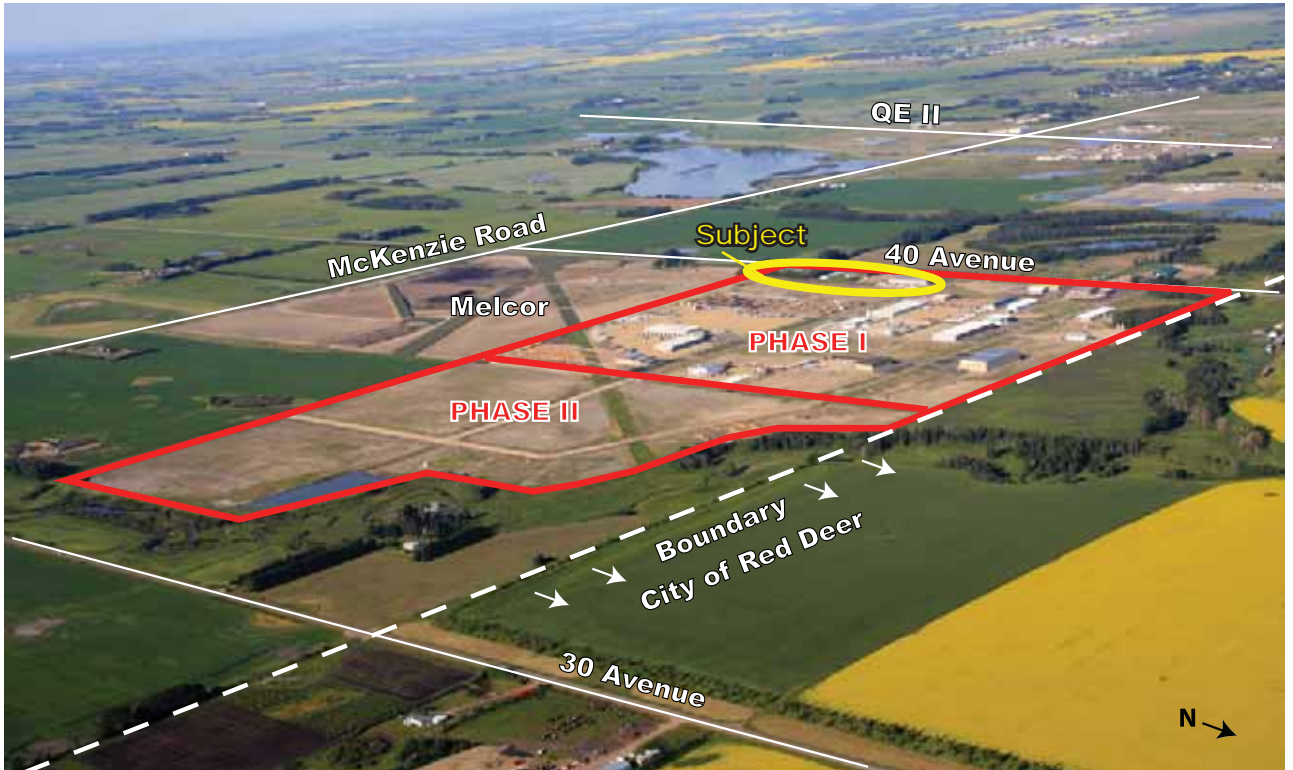


FOR SALE
10.45 Acres +/-
Serviced Industrial Lot
Red Deer, AB



ZONED
BSI

BUSINESS
SERVICE
INDUSTRIAL



FOR SALE
10.45 Acres +/-



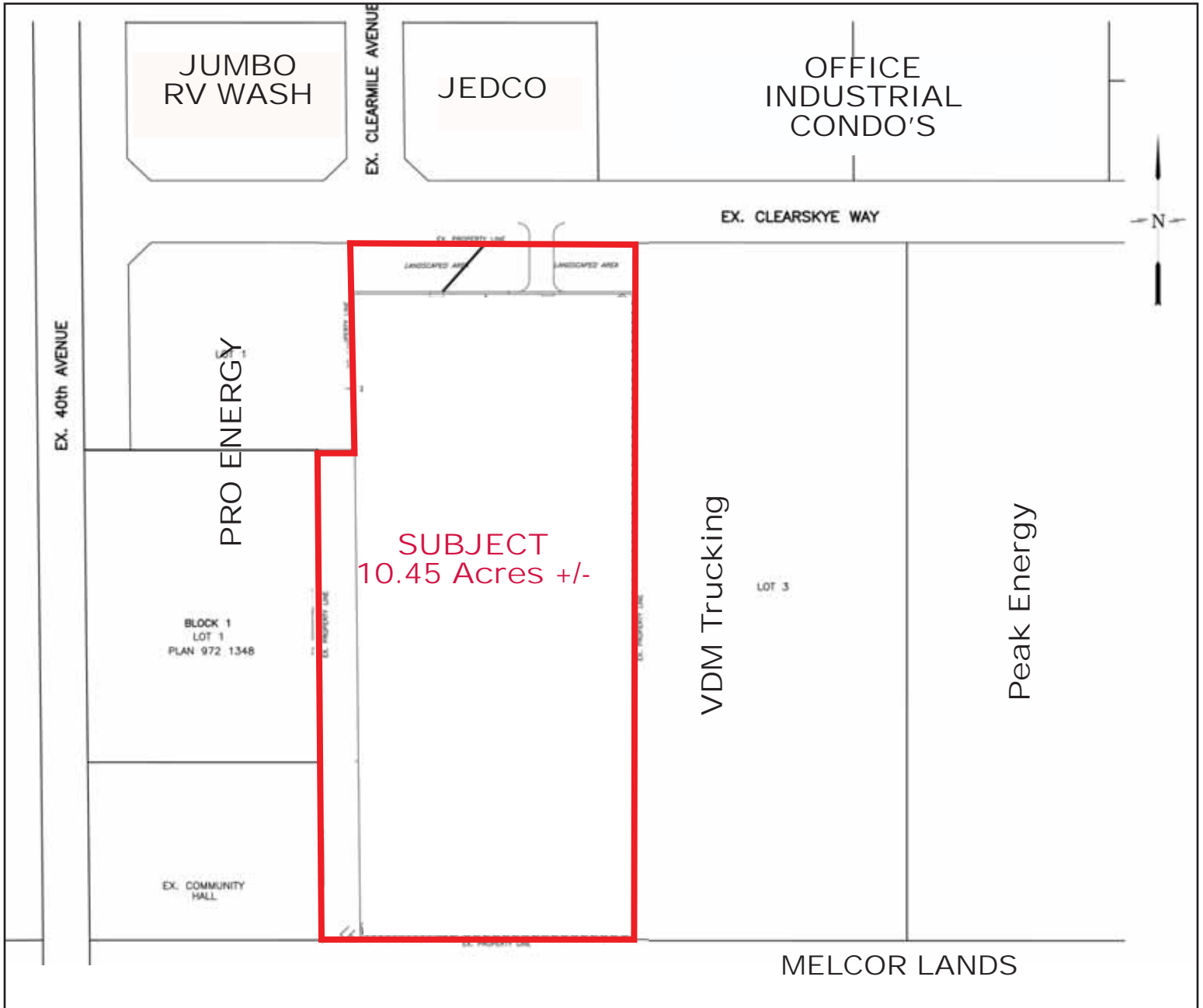
FOR FURTHER INFORMATION, PLEASE CONTACT:

Daniel Goldstrom
dgoldstrom@naicalgary.com
Direct: (403) 291-8864

NAI Commercial
Commercial Real Estate Services, Worldwide.

Suite 1, 6204 - 6A Street SE
Calgary, AB T2H 2B7
Tel: (403) 214-2344
Fax: (403) 214-0244
www.naicalgary.com

FOR SALE
10.45 Acres +/-
Serviced Industrial Lot
Red Deer, AB



FOR FURTHER INFORMATION, PLEASE CONTACT:

Daniel Goldstrom
dgoldstrom@naicalgary.com
Direct: (403) 291-8864

NAI Commercial

Commercial Real Estate Services, Worldwide.

The information contained herein has been given to us by the owner of the property or other sources we deem reliable. We have no reason to doubt its accuracy, but we do not guarantee it. All information should be verified by Purchaser prior to purchase.

Suite 1, 6204 - 6A Street SE
Calgary, AB T2H 2B7
Tel: (403) 214-2344
Fax: (403) 214-0244
www.naicalgary.com

FOR SALE
10.45 Acres +/-
Serviced Industrial Lot
Red Deer, AB

Zoning Map



Red Deer County
 Red Deer County
Zoning
Subdivision
Mapping
 Clearview Industrial
 NW 27-37-27-W4M
 Page 75
 June, 2010

Zoning Type

- AG - Agriculture District
- R-1 - Country Residential
- R-3 - Low Density Residential
- R-4 - Medium Density Residential
- R-6 - Resort Residential District
- R-7 - Condominium Residential District
- R-8 - Manufactured Home Park
- CTC - Comprehensive Town Centre
- C-2 - General Commercial District
- C-3 - Highway Commercial District
- C-4 - Business Service Commercial
- C-5 - Commercial Recreation District
- BSI - Business Service Industrial
- MI - Medium Industrial District
- HI - Heavy Industrial District
- BSA - Business Service Airport
- PS - Public Services District
- PU - Public Utility District

Permitted Uses (Business Service Industrial District)

- Accessory Building and Accessory Use
- Action Mart - No Livestock
- Automotive Repair - Minor
- Commercial Recreation Facility (Indoor minimum 25,000 sq. ft.)
- Crematorium
- Government Service
- Kennel
- Outdoor Storage - as an accessory use only with a maximum area of 20% of the lot area, and screened to the satisfaction of the development officer
- Recycle Depot
- Signs
- Veterinary Clinic
- Agricultural Supply Depot
- Automotive Repair - Major
- Community Facility
- Contract Operation - minimum 929 m. sq. (10,000 sq. ft.) office/shop/warehouse
- Food and Beverage Service Facility
- Industrial/Commercial Training Facility
- Office
- Oilfield Service or Supply Business - Minor
- Public Utility
- Retail Store - Minor
- Truck and Manufactured Home Sales/rentals

Discretionary Uses

- Automotive and Minor Recreation Vehicle Sales/Rentals
- Manufacturing, Processing or Assembly Facility
- Security/Operator Residential Unit
- Heavy Equipment Sales/Rental
- Moved-in Buildings
- Temporary Development
- Warehouse and Storage



Commercial Real Estate Services, Worldwide.

The information contained herein has been given to us by the owner of the property or other sources we deem reliable. We have no reason to doubt its accuracy, but we do not guarantee it. All information should be verified by Purchaser prior to purchase.

FOR FURTHER INFORMATION, PLEASE CONTACT:

Suite 1, 6204 - 6A Street SE
 Calgary, AB T2H 2B7
 Tel: (403) 214-2344
 Fax: (403) 214-0244
 www.naicalgary.com

Daniel Goldstrom
 dgoldstrom@naicalgary.com
 Direct: (403) 291-8864