

FULLY LEASED!!

Elbow Plaza

**8408 Elbow Drive SW
Calgary, AB**

**CALL LARRY FOR OTHER GREAT
LEASE OPPORTUNITIES!!**



FOR LEASE

540 Sq. Ft.

Property Highlights:

- Available immediately.
- "Like New" condition.
- Southeast corner of Elbow Drive and Heritage Drive SW.
- Close proximity to Heritage LRT station.

FOR FURTHER INFORMATION, PLEASE CONTACT:

Larry Thomas

lthomas@naicalgary.com

Direct: (403) 291-8867

NAI Commercial

Commercial Real Estate Services, Worldwide.

Suite 1, 6204 - 6A Street SE

Calgary, AB T2H 2B7

Tel: (403) 214-2344

Fax: (403) 214-0244

www.naicalgary.com

FULLY LEASED!!

Elbow Plaza

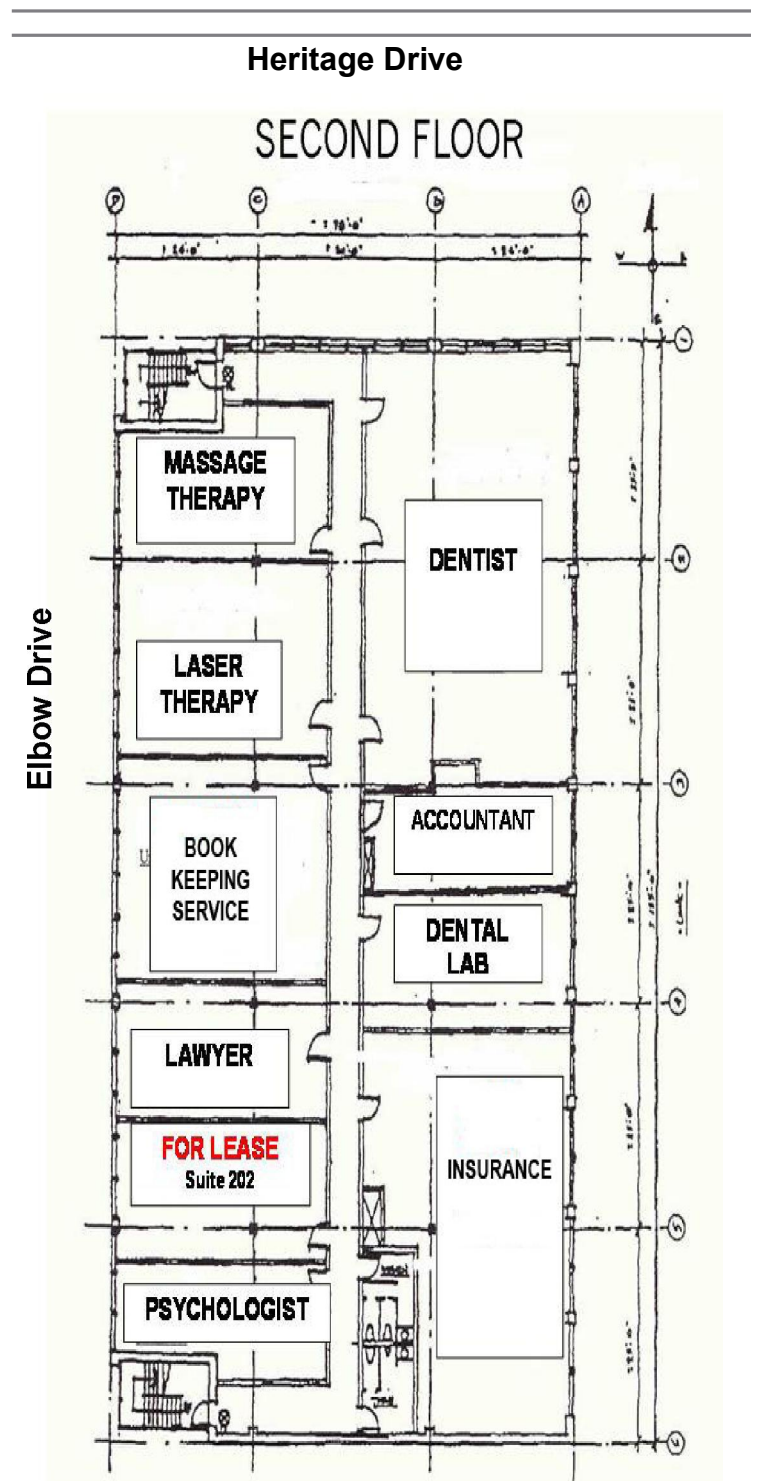
**8408 Elbow Drive SW
Calgary, AB**

Property Details

- Term:** 5 - 10 years
- Available Area:** Unit 202 - 540 sq. ft.
- Rental Rate:** \$14.00 p.s.f. net
- Operating Costs:** \$11.50 p.s.f. includes utilities excludes janitorial
- Parking:** No charge parking lot



Floor Plan



FOR FURTHER INFORMATION, PLEASE CONTACT:

Larry Thomas
lthomas@naicalgary.com
Direct: (403) 291-8867



Commercial Real Estate Services, Worldwide.

The information contained herein has been given to us by the owner of the property or other sources we deem reliable. We have no reason to doubt its accuracy, but we do not guarantee it. All information should be verified by Purchaser prior to purchase.

Suite 1, 6204 - 6A Street SE
Calgary, AB T2H 2B7
Tel: (403) 214-2344
Fax: (403) 214-0244
www.naicalgary.com