

FOR SUBLEASE SIMONS VALLEY PLAZA

Retail / Office Space
6219 Centre Street N.W.
Calgary, AB



FOR SUBLEASE

1,259 sq. ft.



Highlights

- Average of 26,000 vehicles pass by daily.
- 43,000 population in a 3 km radius.
- \$58,959 average family income.

FOR FURTHER INFORMATION, PLEASE CONTACT:

Colleayn Mastin
cmastin@naicalgary.com
Direct: (403) 291-8868

Blair Mastin
bmastin@naicalgary.com
Direct: (403) 291-8869

NAI Commercial

Commercial Real Estate Services, Worldwide.

Suite 1, 6204 - 6A Street SE
Calgary, AB T2H 2B7
Tel: (403) 214-2344
Fax: (403) 214-0244
www.naicalgary.com

FOR SUBLEASE

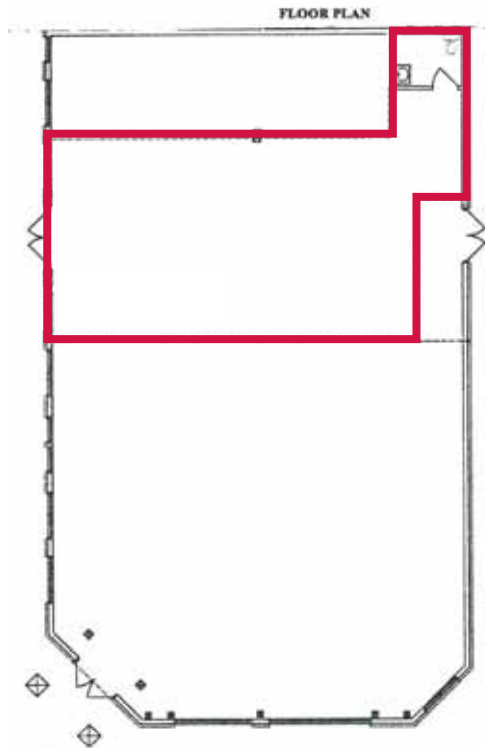
Retail / Office

6219 Centre Street N.W.
Calgary, AB

Location Map



Floor Plan



Property Description

Sub-leaseable Area:	1,259 sq. ft.
Available:	Immediately
Parking:	Ample
Net Rate:	Market
Op. Costs:	\$8.20 p.s.f.
Utilities:	Separately metered
Signage:	Fascia & Pylon

Tenant Mix

- IDA Drug Store
- All State Insurance
- H & R Block
- Simon Valley Medical
- Half Time Bar & grill
- My Pet Beauty
- Thirsty Dog Pub
- Kings Liquor
- Big D Toys
- Trimming Fresh Meat
- Artis Hair Design
- Marvellous Cleaners
- Vet Clinic
- Golden Princess Restaurant
- Stolos Pizza & Pub

FOR FURTHER INFORMATION, PLEASE CONTACT:

Colleayn Mastin
cmastin@naicalgary.com
Direct: (403) 291-8868

Blair Mastin
bmastin@naicalgary.com
Direct: (403) 291-8869

NAI Commercial

Commercial Real Estate Services, Worldwide.

The information contained herein has been given to us by the owner of the property or other sources we deem reliable. We have no reason to doubt its accuracy, but we do not guarantee it. All information should be verified by Purchaser prior to purchase.

Suite 1, 6204 - 6A Street SE
Calgary, AB T2H 2B7
Tel: (403) 214-2344
Fax: (403) 214-0244
www.naicalgary.com